

MARTZ  **AGENCY**

Arizona Home & Design

March-April 2008

Hacienda Living

Front Cover, Pages 32-39

ARIZONA
Home & Design



*****ECRLOT**C-005
SARAH THOMPSON
MEDIA PLANNER/BUYER
MARTZ AGENCY
7000 E ACOMA DR
SCOTTSDALE AZ 85254-3549

PRINT STD
JOB POST 20
PERMIT 4129
LIBERTY
900
P3
2/5

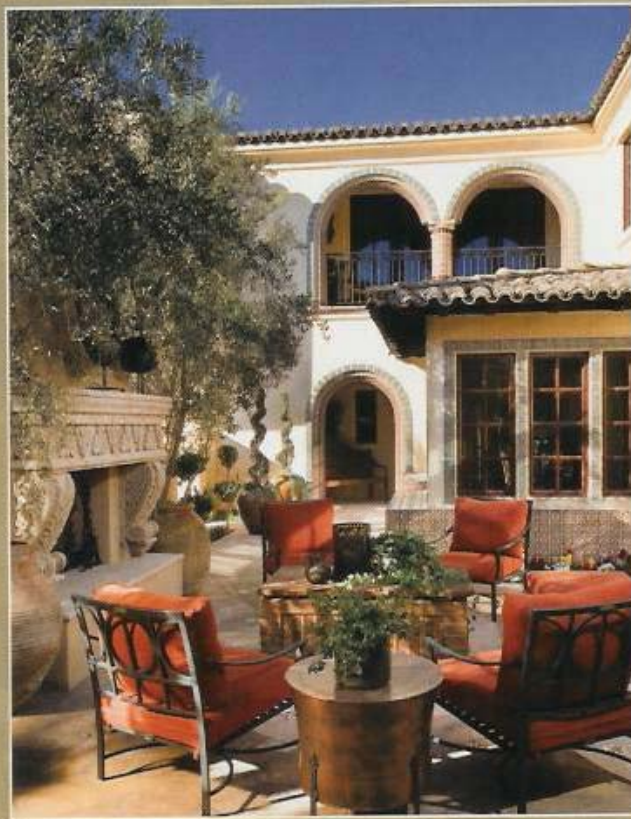
MAR-APR 2008 \$3.95

World Comfort
Look to the past for inspiration today



• Hacienda • Living •

Southern Spain meets Paradise Valley at the new Montelucia Villas • By Beth Artman



Left page: Quintessential rustic elegance, a villa at Montelucia has a stairwell designed with wrought iron and hand-painted tiles. Photo courtesy of Dino Tonn Photography Inc.

Above: A king-size fireplace provides a welcoming focal point in courtyard areas. Photo courtesy of Dino Tonn Photography Inc.

Scottsdale designer Beth McGehee, principal of Studio B in Scottsdale, does more than simply design homes and their interiors — she breathes life into their residents' dreams.

"This is absolutely my passion," McGehee says. "I get tremendous gratification out of creating meaningful and personal spaces for my clients — places they feel a part of, and homes that bring them joy and excitement when we finish them."

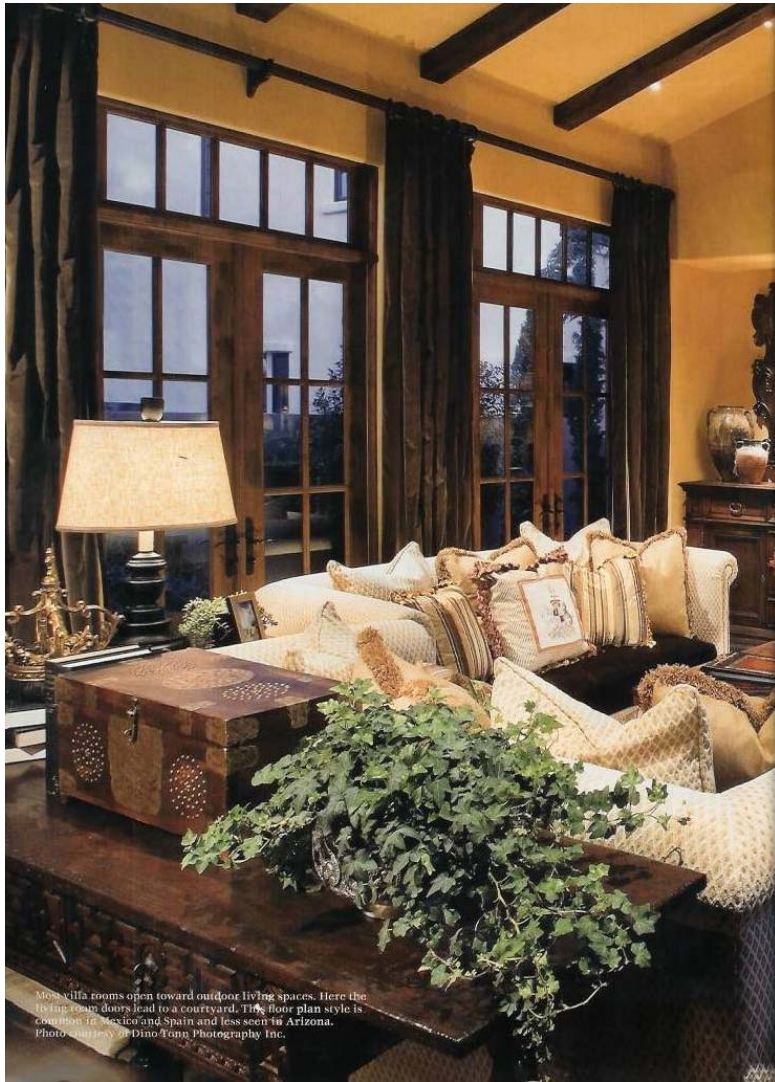
McGehee's 20 years of award-winning construction experience includes a lengthy list of accomplishments, from high-end custom home and project management for Phoenix residential builders to serving as vice president of construction for larger development projects. Her current undertaking is overseeing the interior and exterior design elements of the residential villas at the new InterContinental Montelucia Resort & Spa in Paradise Valley.

In its entirety, Montelucia — scheduled to open this spring — will include a luxury resort with 253 guest rooms and 40 suites; a 31,000-square-foot, two-level spa building; the aforementioned 34 detached, single-family villas ranging from 3,800 to 4,700 square feet; restaurants and shopping; five pools and a state-of-the-art health club; and the only private wedding chapel located in an Arizona luxury resort.



Homeowners at Montelucia offer turn the second-level bonus room into a family room, as shown here. Photo courtesy of Dino Tonn Photography Inc.







"Not only will this be a small community, but it will be the highest caliber of a community," says Rick Carpinelli, senior vice president of development for Crown Realty & Development Corp., the project's owner/developer. "What makes this community unique is that although there are other hotels that sell some kind of residential product, our real differentiator is that we cater to someone who wants to live here on a full-time basis. It's a wonderful opportunity for someone who loves this area, wants to be active in the community, and also wants the full services and amenities of a luxury resort at their fingertips."

Those amenities can include a dinner cooked by a private chef, an in-home massage or a private wine tasting hosted by one of the resort's sommeliers. Residents can enjoy a "concierge lifestyle" that will include assistance in entertainment reservations, tee times, travel arrangements and even everyday errands such as dry cleaning and car detailing, to mention a few.

Debbie Gaby is drawn to the resort perks and quality of life and is among the first residents to purchase a unit at Montelucia. She and her husband bought a 4,850-square-foot villa about two years ago, and they plan to sell their current larger house in Paradise Valley because its sprawling lot and many water features make it high-maintenance. As president of Sleep America, she travels often for work and finds the lock-and-leave, maintenance-free living at Montelucia highly appealing.

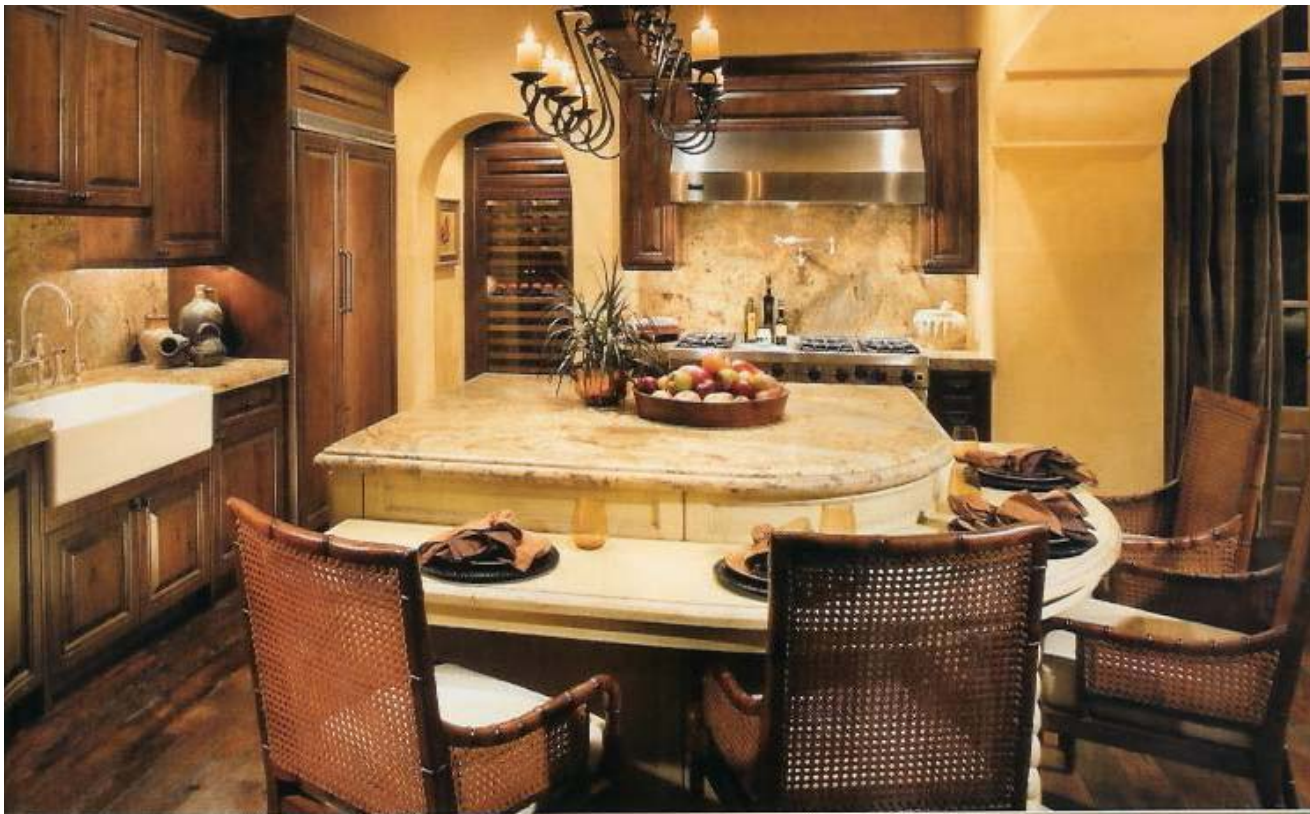
"They maintain everything for you. I just felt it was a rare opportunity that comes once in a lifetime," Gaby says. "I also like the fact they're hosting weddings there. There's nothing more exciting than your wedding day. We'll be living in a community where the atmosphere will be positive and happy."

White-glove service aside, Villa owners will have access to a designated resort pool and lounge area, priority discounted spa

Left page, top: A villa's interior borrows colors from the earth. Browns, creams and rusts dominate the design in this bedroom. Photo courtesy of Dino Tonn Photography Inc.

Left page, bottom: The dining room's signature brick ceiling gives the space a cozy ambience. Photo courtesy of Dino Tonn Photography Inc.

Right page: The villas feel cozy, despite their sizeable rooms such as the kitchen shown here. The snug vibe comes partly from the ample use of wood and warm colors. Photo courtesy of Dino Tonn Photography Inc.



service and complimentary movement classes. This concept of worry-free, luxurious living requires a very tangible look of clean, understated elegance.

Modeled after Old World-style Andalusian villages that blend simple Spanish architecture with rich Moroccan influences, Montelucia will feature a balance of whitewashed walls and warm-hued interiors marked by exquisite craftsmanship and sharp attention to distinctive, colorful details.

That's where McGehee plays a starring role, as she manages design specifics and construction of the Villas at Montelucia.

"Because our design intent was to give Montelucia the flavor of an Andalusian village in Spain, we selected materials that would ensure that integrity," she says. "For example, we incorporated touches of color into the clay roof tile blend. Usually in Arizona, we see browns, clays, reds and terra cotta. Here, we also added golds and greens for color — the blend of color was just as important as the installation."

Priced from the low \$2 millions, the Villas also feature hand-forged custom iron work, hand-painted Spanish ceramic tiles, carved cantera stone, and hand-troweled integrally colored stucco walls among their exterior elements.

"In the use of many materials alone, this community is one of the most unique products in Paradise Valley," McGehee says. "Our objective was to create homes that were cohesive with the resort, but to use subtly varying color palettes and material finishes to distinguish the residential area."

No two villas will be alike, as one of McGehee's primary responsibilities is to organize private sessions with owners to

customize details. Residents choose the patterns and colors of the hand-painted tiles on their stairwells, the arrangement of hand-forged light fixtures and the ironwork on staircases. Homeowners even choose the patterns on their 2-inch thick wooden doors, which are hand-carved by a local artisan so no two doors in the community will be alike.

Individualized landscaping also is important, since homeowners will be living in outdoor areas where there are pools, fountains, fireplaces and spas that create a special sense of place.

"They're looking for that lifestyle of being able to open up their doors and extend their living areas from the inside to the outside," McGehee says.

Adds Gaby: "This is our dream place to enjoy the rest of our lives. We're downsizing and really looking forward to simplifying things." ■ ■ ■

✕
www.montelucia.com
✕

Architect: Backen Gillam
Architectural design: Allen + Philip Architects
Interior design: Allen + Phillip Architects, Studio B
Landscape design: E Group
Property developer: Crown Realty & Development
Villa builder: Rowland Luxury Homes